



Grants Cibola County Schools:

Student Design Team from

Laguna Acoma High School

Grants High School

Early College High School

*Stakeholder Engagement:
Profile of a Graduate*

Profile of a Graduate



A presentation put together by
Grants High, Laguna Acoma High, and
Early College High students



Meet the team!

Introductions

Content:

1

Our Student Process

2

Accomplishments

3

Survey Engagement

4

National Milestones

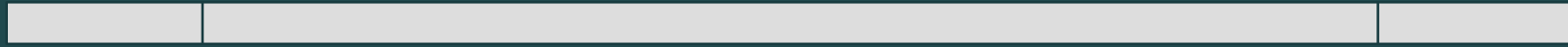
5

Future Goals

6

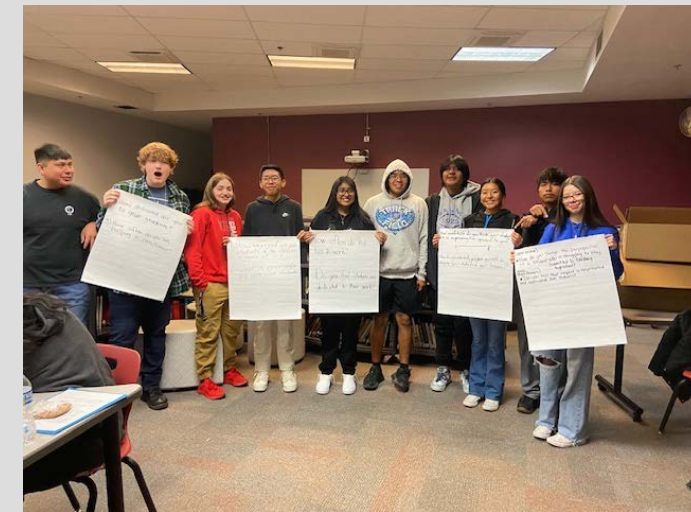
Q & A

Our Student Process



Our Student Process

The Johns Hopkins design team believes in uplifting the voices of students, consulting those most impacted by the creation of the Profile of a Graduate. While input from adults is certainly helpful, we prioritize students, allowing them to have more of an input on their future.



Monthly meetings

Roughly every month, we have a meet up for our design team.

Some things we work on include:

- Planning focus groups
 - Planning surveys
 - Teambuilding
- Skills and Ideals of a graduate

Equal Input

As a group of students, we want to make sure every member of our team is allowed to get their thoughts and ideas into our final product.



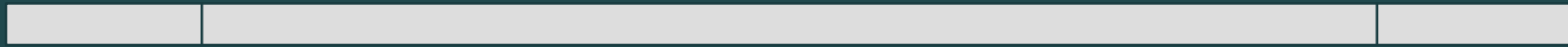
We value the many unique ideas that our peers bring to the table, and by creating a safe atmosphere for questions we receive our best product

Focus Groups

Accomplishments



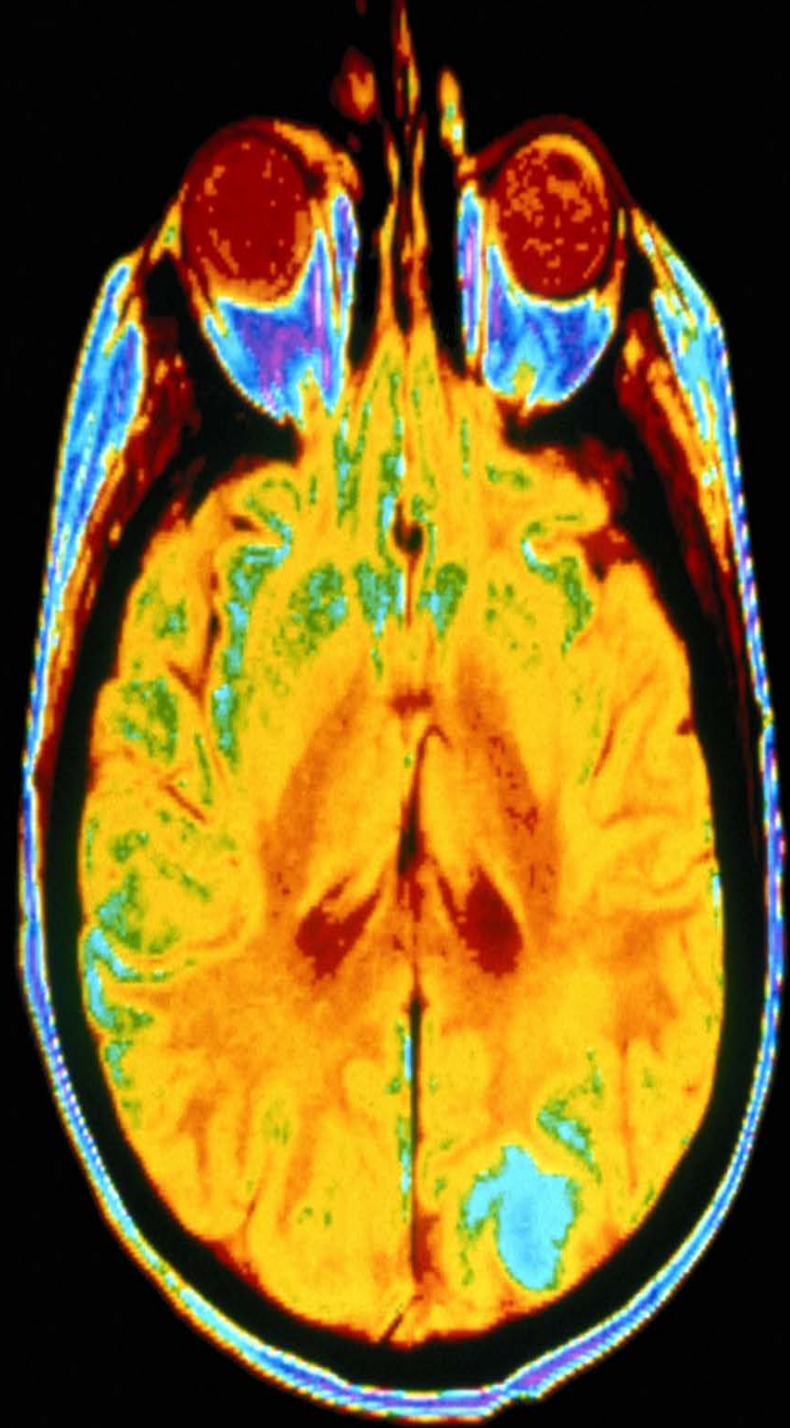
Survey Engagement



Survey Engagement

We've created and distributed 4 surveys for our most influential groups for our profile of a graduate:

- Teachers
- Students
- Parents
- Community



Student Survey

Our student survey focused on

- school representation
- future outlooks
- trust in the school environment.

Parent Survey

Our parent survey focused on:

- parental expectations
- trust in the quality of education
- communication between parents and the school.

Teacher Survey

The teacher's survey focused on

- classroom environment
- emotional connection to students
- teacher's commitment to their roles

Community Focus Group

Our community focus group
focused on

- Academic skills in high school
- Non-academic skills in high school

Key Takeaways

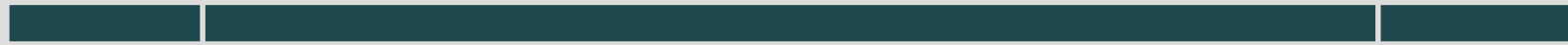
Strengths identified:

- Cultural pride
- Mutual respect and support

Strengths needed:

- Practical life skills
- Communication (for all involved)

National Milestones



Asset-Based Mindset

An Asset-Based Mindset is a way of thinking that focuses on the strengths of individuals and communities instead of shortcomings.

Cultural Elements

Cultural elements identified at GCCS
include:

- Diversity
- Integrity
- Loyalty
- Resilience

Core Values

Important core values include:

- Altruism
- Balance
- Commitment
- Confidence
- Respect

Skills and Competencies

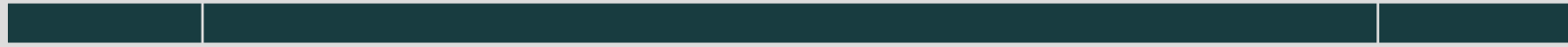
Important skills include:

- Setting Goals
- Time Management
- Delegation
- Building Relationships

Skills and Competencies (cont)

Skills	Competencies
Setting Goals	Responsibility
Time Management	Comprehension and Critical Thinking
Delegation	Leadership
Building Relationships	Communication

Future Goals



**A few ideas for continuing this
program are:**

- **Working with the district to
enact policies**
- **Emphasize the Profile of a
Graduate as a living document**
 - **Spreading the word!**

Questions?

